

LIVE PRODUCTION CONSOLE

F-TYPI

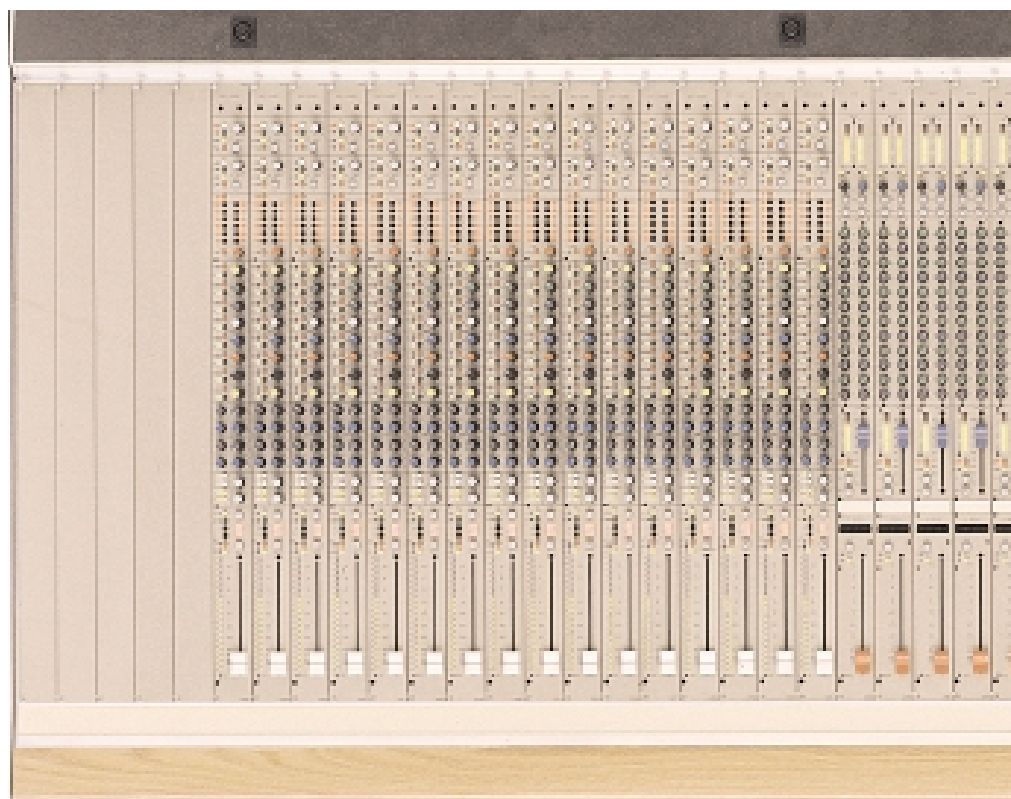
cadac
SOUND EVOLUTION

THE CADAC F-TYPE

TRIED AND TESTED FOR TOURING

The frame, built of custom aluminium extrusions, contributes to the F-Type's combination of strength and flexibility, without paying the penalty of excessive weight. Cadac's use of

jacks are hand-wired to avoid the stresses caused by direct mounting to PCBs. The modules use plug-in daughter boards for active electronics, permitting rapid repairs should they be necessary, and



multiple user-configured frames for larger consoles offers a versatile approach, allowing rental companies to tailor each desk to the specification and budget of each new job. In addition, the F-Type features a small footprint (just 820mm/32" front to back), for installations and tours where space is at a premium.

The proven module design ensures that delicate electronics are protected from the rigours of life on the road, with steel cradles used to locate modules exactly whilst allowing a degree of movement for the bus connectors. Rear XLRs and

can be hot-plugged without risk. Most types of multiway connector can be accommodated.

Sophisticated automation has been integral to the Cadac concept since 1986, when the company created its first central assignment desk.

The F-Type can be used with as little or as much automation as required, and module options cater for totally manual operation through to Cadac's motor fader system with comprehensive internal and external control facilities.

CADAC consoles have an impressive track record when it comes to delivering faultless performances night after night, year after year, on almost every imaginable type of production. International musicals, the world's most prestigious theatres and opera houses, major awards ceremonies - for critical applications where quality is paramount, the CADAC name is synonymous with top quality audio within a rugged, reliable package.

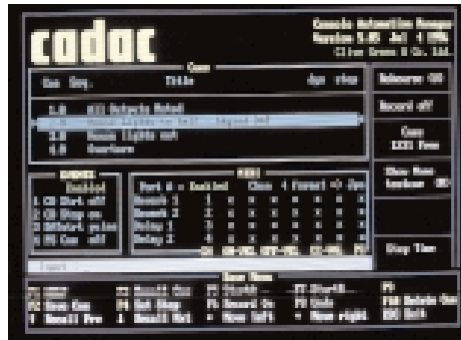
The cost of quality is based on making a sound investment. With today's diverse mix of live productions, a console has to work hard, be adaptable and above all, perform perfectly. CADAC consoles are designed to endure, using high quality components, complemented by innovative electronic and mechanical designs. With the introduction of the F-TYPE console, there is now an unrivalled breadth of choice to suit every budget. The F-TYPE provides a wealth of facilities and functionality, contained within a modular package which can be extended and developed as required.

From the smaller repertory theatre or sound hire company requiring straightforward facilities, to demanding tours needing a comprehensively specified mixer - the F-TYPE is designed to offer modularity with easy upgradeability, protecting your investment for the future, all without compromising the renowned CADAC reputation for audio quality, reliability and enduring performance.

LIVE PRODUCTION CONSOLE

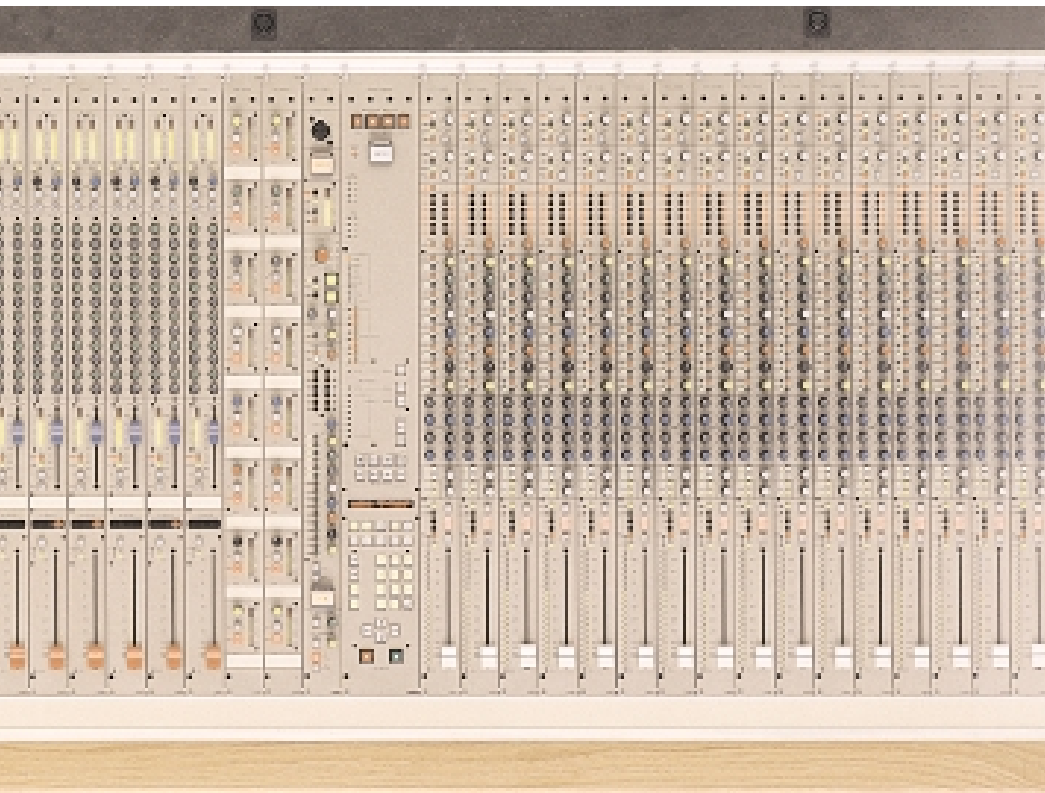
THEATRICAL EXCELLENCE

The Cadac marque has always enjoyed a reputation for excellence in theatre circles. With the arrival of the F-Type, a wider audience can now realise the value of Cadac engineering and quality.



THE CADAC F-TYPE - A SOUND INVESTMENT

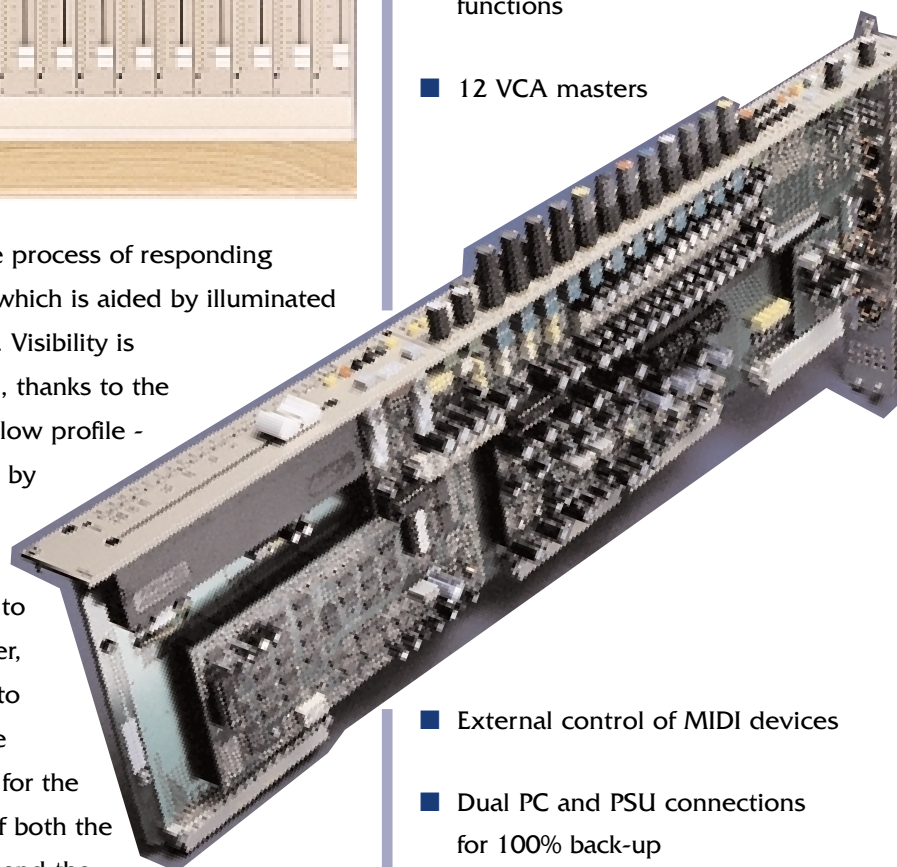
- Compact frame with configuration flexibility
- Unrivalled audio quality
- Up to 112 dual or single input channels
- 12 subs, 24 matrix outputs, up to 16 aux mixes
- Choice of manual, VCA or motor faders
- Transformer-balanced output option
- Logic-assisted PFL system
- Integral automation of key functions
- 12 VCA masters



The F-Type's size takes into account the fine balance between seats and space for a front of house mixing position, or the need to fit into a compact control room. It provides a range of options which ensure that quality is not compromised by budgetary considerations, including the user's choice of frame size plus a mix of modules and facilities.

The F-Type's control layout complements the creative process, leaving the operator free to concentrate on the all-important task of mixing. Logical, intuitive controls

assist the process of responding quickly, which is aided by illuminated switches. Visibility is excellent, thanks to the F-Type's low profile - achieved by locating meters adjacent to each fader, in order to lower the sightline for the benefit of both the operator and the audience.



- External control of MIDI devices
- Dual PC and PSU connections for 100% back-up

A G L O B A L P E R F O R M E R

Cadac consoles are a regular feature on the world's major musical productions - *Les Miserables*, *Miss Saigon*, *Phantom of the Opera*, *Sunset Boulevard*, and *Tommy*, to name a small selection. The Cadac name is also a familiar sight in prestigious international theatres. In the UK, *The Royal National Theatre*, *The Royal Shakespeare Company*, *The Royal Opera House* and the *English National Opera* are all long-standing Cadac customers. Other major venues include the *Raimund Theatre* in Vienna, *The Royal Opera House* in Stockholm, *The*

National Theatre of Korea and the *O'Keefe Centre* in Toronto, Canada.

CADAC BUILD QUALITY

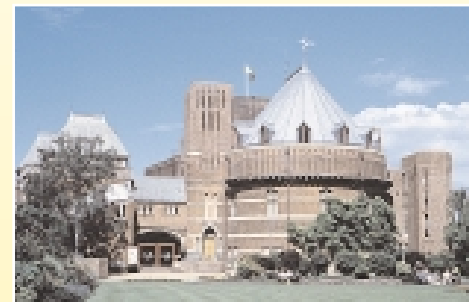
Cadac's attention to build quality is renowned. The company has pioneered console design since the late 1960s, and since the early 1980s, has focused very specifically on the sound reinforcement sector and its unique set of design criteria. For theatre and live sound, Cadac can claim to have set the standard with its innovative designs.

Leading sound designers regularly specify Cadac technology - a guarantee of consoles which will provide the sophistication and performance that modern productions require. All Cadac consoles are designed, manufactured and tested at the company's UK headquarters in Luton, where a skilled team is on call to support customers in the field. This is complemented by a global network of technical distributorships, chosen for their ability to provide first-class support to Cadac's many customers around the world.



Richard Lienard of Sound Hire, who took the first-ever production F-Type (known as *Mimi*) straight out to Italy for the Pavarotti and Friends rock concert: *"Mimi performed fine, delivering an incredibly clear sound - we have just used it on the Three Tenors Concert at Wembley, and its transparency really showed up. We are very pleased and impressed with how our two desks are performing."*

◀ **Sound Hire's Jerry Eade** with John Pellowe, FOH engineer for Pavarotti, with *Mimi* at Modena.



The Royal Shakespeare Company (RSC) in Stratford upon Avon chose a 20-input F-Type for its Swan Theatre to complement the Cadac J-Type installed in the Royal Shakespeare Theatre next door.

Pavarotti on song with ▶ one of his 'Friends' - Eric Clapton - from the Pavarotti and Friends concert for the War Child charity, held in Modena, Italy in 1996.



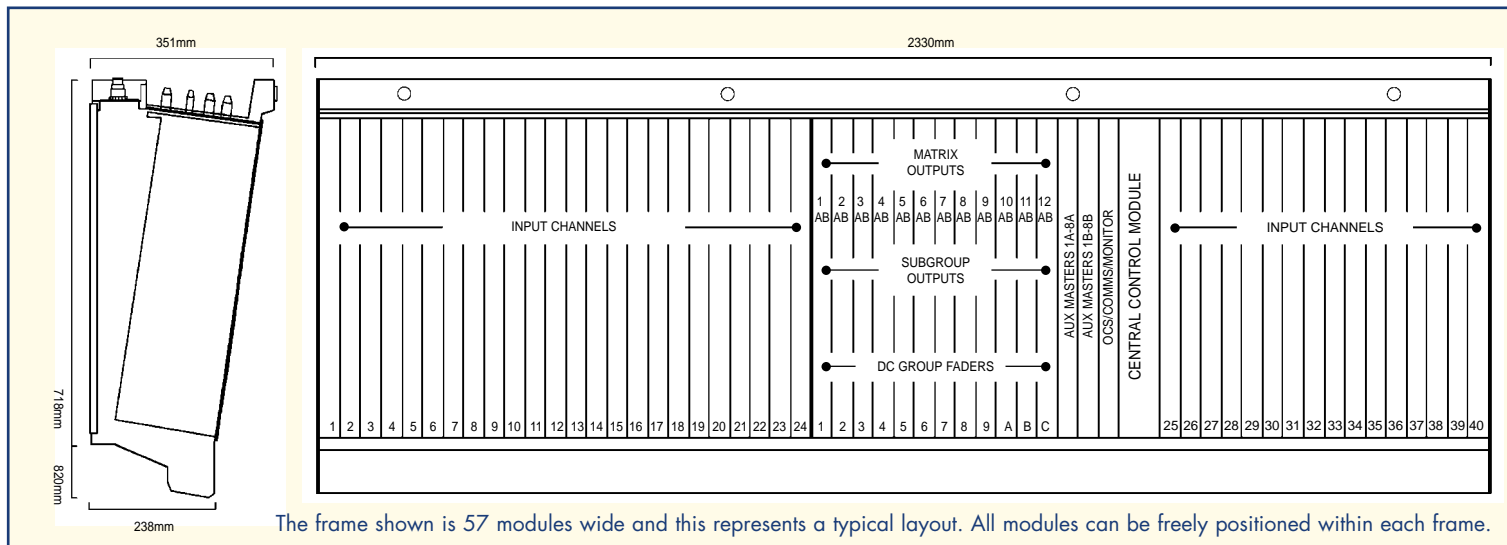
Patrick Baltzell on the F-Type: *"The F-Type is really wonderful - A and B inputs on each channel, automated faders, 4-band parametric EQ, brilliant metering and instant cue recall, combined with its small footprint - all make it an exceptional board for any multiple act large-scale event where seats are at a premium. It's my favourite console!"* ▼



◀ **The Performing Arts Council of Transvaal** in South Africa selected the F-Type for the State Theatre in Pretoria, for its busy repertoire of in-house productions and tours. The State Theatre's 26-module frame (equipped with 12 of Cadac's "Basic" input modules and a 44-output master section), is complemented by a "floating" 36-input extension frame for other applications.



GENERAL SPECIFICATION



FRAME

The F-Type is constructed from extruded aluminium bearers, fixed to 7mm two-part aluminium end profiles, allowing multiple frames to be positioned so that modules are almost adjacent. Internal audio bussing is balanced and uses ribbon cables, plugged into steel cradles. Data busses use separate ribbon cables and power bussing is achieved using copper wire rated at 40A per rail. Frame-mounted connectors include diode-mixed power inlets, earth points, headphone and Littlite connections, as well as optional bus expansion connectors. The frames incorporate multiple cooling fans with a 5-speed control. Any frame size may be specified, up to 63 modules wide.

MODULES

The F-Type's modules are made up of a motherboard, with plug-in daughter boards containing the majority of the systems' electronics. This ensures servicing simplicity and fast replacement of any faulty component. Each module may be plugged into any position in the console frame using a top quality two-part connector system,

designed as a mating pair to provide excellent mechanical and electrical reliability. An aluminium rail system is used to guide each module into its correct position. The console design allows modules to be removed or inserted without powering down.

CONNECTORS

Audio connections will be determined by the user's specification and whether a patchbay is required. XLR type connectors are standard for all inputs and outputs. ¼" jack sockets are used for insert sends and returns. Two other possible variations are:

- Military standard round multiway connectors for a touring system, with a separate patchbay.
- Varelco multiway connectors for a fixed installation, with a separate patchbay.

POWER SUPPLIES

Each F-Type console requires the following:

- ±18v for the audio electronics
- +13v for LEDs, relays and logic circuits
- +48v for phantom powering of microphones

The power supplies are contained in 19" rack cases and are connected via a heavy duty, shielded multicore cable with military circular bayonet connectors at each end. Each board may be powered by two independent power supply systems, operating simultaneously.

FINISH

All Cadac front panels are machined from custom-designed 3mm aluminium extrusion, which is stove enamelled, silk-screened and lacquered. The silk-screened legend is designed to withstand arduous operating conditions.

Custom-made flight cases are available for the F-Type console, as required.

STANDARDS

The F-Type is designed to the following standards: 89/336/EEC Electromagnetic Compatibility Directive amended by 92/31/EEC & 93/68/EEC and BS EN60065 (1994).